



Leadsheet (C-Instrumente) Waterman Soulblues

Ansprechpartner: Sascha Wild, kontakt@schuljazz-frankfurt.de, mobil: 0177 5387697

Ablauf: Intro - 2x Thema - 3x Solo - 4x Riff - 1x Thema - Solo Riff as ending

Intro



Thema



Solo-Riff



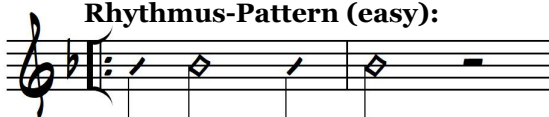
Solo-Töne (easy):



Solo-Töne (medium):



Rhythmus-Pattern (easy):



Rhythmus-Pattern (medium):

